

Your vision, automated



MCOM700WD

WIRELESS FIDELITY



The MCOM700WD is a wireless Wi-Fi modem designed for reliable data communication in industrial applications. It supports a 2.4–2.5 GHz wireless interface, along with RS-232/RS-485 communication, 4 digital inputs, 4 analog inputs, and 2 digital outputs. The modem operates in both transparent and intelligent modes, allowing it to receive and buffer sensor data wirelessly, while also enabling users to read sensor values through MODBUS RTU commands. With support for 16 wireless channels and 8 group IDs, the MCOM700WD offers easy configuration and efficient wireless network management through the serial interface.

➤ FEATURES

- 2.4 GHz Radio Frequency
- 16 RF Channels
- One RS-232/RS-485 4 Digital Input, 4 Analog Inputs And 2 Digital Output ports
- Supported MODBUS RTU protocol (Master/Slave)
- Supported data buffers of sensors
- ESD Protection: +/- 4 kV for contact terminal
- DIN-Rail Mountable
- Operating Temperatures: -25 °C ~ +75 °C

➤ SPECIFICATIONS

- **RF INTERFACE**

Radio frequency	2.4 - 2.5 GHz
RF channel	0 to 15 (configured by serial port)
Transmission power	9±1dBm (PA Off) / 18±1dBm (PA On)
Transmission distance	100m (Line of sign, LoS)

- **COMMUNICATION**

Interface	RS-232 X 1 / RS-485 X 1, 4 X DI, 4 X AI, 2 X DO, 2 X PULSE
Connector	Screwed terminal block (TXD,RXD and GND in RS-232 / D+,D- in RS-485)
Protocol	MODBUS RTU
Modbus address (Node ID)	1 to 31
COM0 Baud rate	1200, 2400, 4800, 9600, 19200, 38400, 57600, 115200bps

- **LED INDICATOR**

Power	Red X 1
RF_Tx	Green X 1
RF_Rx	Yellow X 1

- **EMS PROTECTION**

ESD	+/- 4kV Contact
EFT	+/- 1kV
Surge	+/- 1kV

- **POWER**

Input voltage range	+10 to +30 VDC
Power consumption	0.5W Max.

- **MECHANICAL**

Dimension (L X W X H)	107mm X 63mm X 30 mm(without antenna)
Installation	DIN - Rail

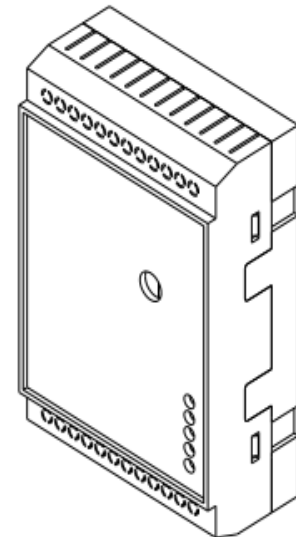
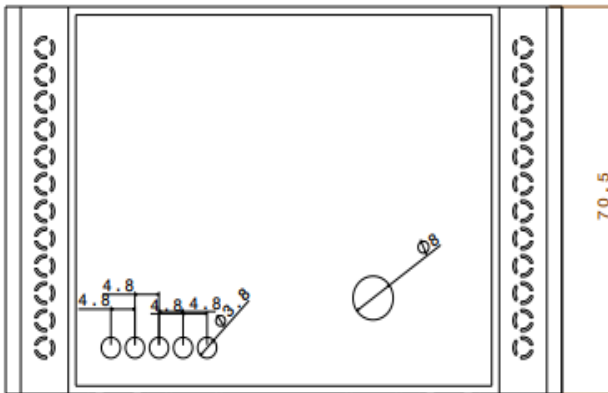
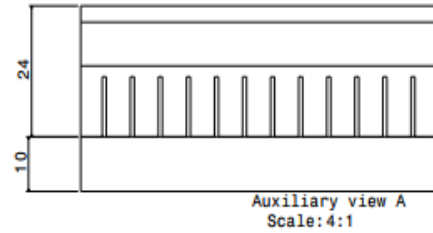
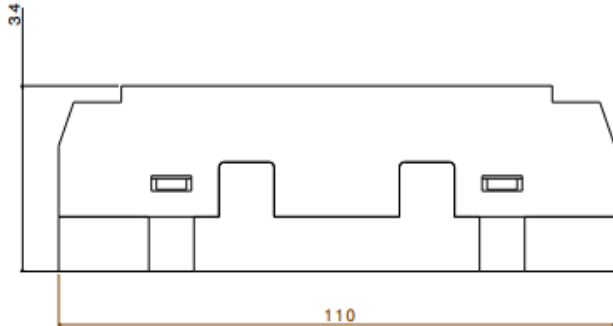
- **ENVIRONMENTAL**

Operating temperature	-25 to +75°C
Storage temperature	-30 to +80°C
Relative humidity	10 to 90% RH, Non-condensing

- **OTHERS**

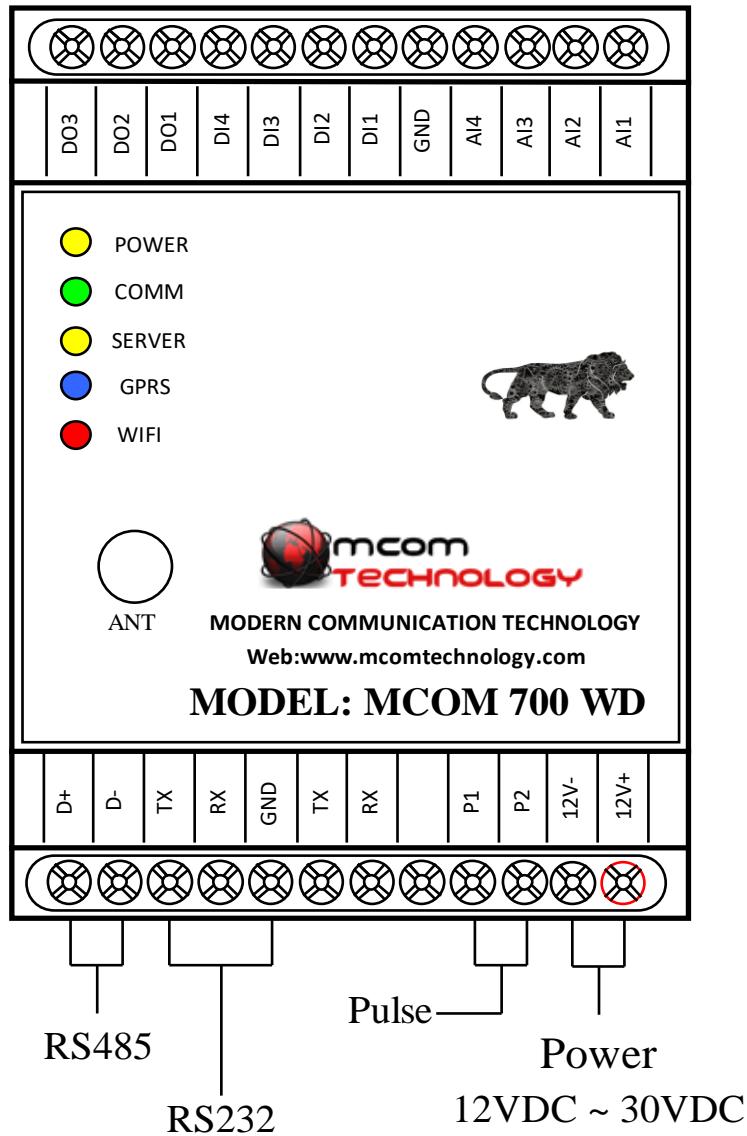
Certification	CE
---------------	----

➤ DIMENSION DRAWING



Isometric view
Scale: 3:1

➤ CONNECTION DETAILS



MODERN COMMUNICATION TECHNOLOGY

Sr. No. 23, Plot No. 1, Hissa No. 3/1, Behind Wadekar Industries, Narhe, Pune-411041, Maharashtra (India)

Email Id. ravi@mcomtechnology.com , Web: www.mcomtechnology.com

CONTACT: +91 9405134829, 7769827105, 9595383766